



FLOOR and more®

Dry Hollow Floor system for high demands

The dry hollow floor system FLOOR and more® offers stability and state-of-the-art technology. The hollow floor panels consist of fibereinforced calcium sulphate. The gluing of the FLOOR and more® panels is made with a special tongue and grooving at the edges of the panels which are forming a closed load bearing layer. The substructure consists of height-adjustable zinc-coated steel pedestals from our own production which form the necessary cavity for installations.

- quick to install dry hollow floor system
- can be used after just one day
- suitable for all floor coverings

Examples for areas of application

Public Areas: Entrance Areas, Escape Routes

Work: Common Rooms, Facilities for Meetings, Conventions and Conferences, Stage and Studio Rooms, Office Buildings, Broadcasting Rooms, Television Studios, Assembly Rooms

Education: Libraries, Research Rooms, Schools, Universities and Higher Education Buildings

Businesses, Recreation and Culture: Shopping Centres, Sales Areas, Banks, Cinemas and Multiplex Theatres, Concert Halls, Theatres and Opera Houses, Museums and Galleries, Sports Halls and Gymnasiums, Stadiums and Arenas, Places of Assembly

Healthcare: Clinics and Hospitals, Laboratories and Research Facilities, Operating Theatres

Hotels and Gastronomy: Restaurants and Catering Facilities, Commercial Kitchens, Hotels and Resorts

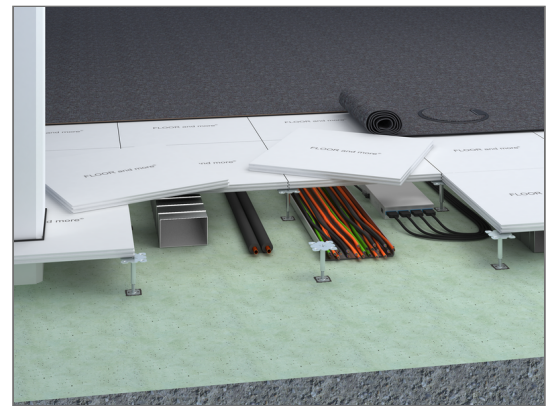
Industry: Laboratories and Research Facilities, Factories and Production Facilities

Public Institutions: Courts and Correctional Facilities, Town Halls, Government and Administrative Buildings

Ship Interior Fit-out

Transport: Railway Stations, Airports

Residential building



Technical details

Dimensions

Panel thickness	30 - 40 mm
Standard pedestal height	40 - 2000 mm
Pedestal grid	600 mm x 600 mm
Weight	41 - 55 kg/m ²

Static

Statics

Load Class	EN 13213	2 - 5
Point load (breaking load)	EN 13213	3 kN (6 kN) - 5 kN (10 kN)
Seismic safety		possible according to DIN EN 1998-1



Fire protection

Building material class

Building material class		of the carrier panel
Building material class	EN 13501-1	A1
Designation by building authorities	EN 13501-1	non-combustible

Fire resistance

Fire resistance	DIN 4102-2	F 30
Fire resistance	EN 13501-2	REI 30 possible with additional measures REI 60 possible with additional measures

Acoustics

Building acoustics

Weighted normalised flanking level difference depending on additional measures	ISO 717-1	$D_{n,f,w}$	36 - 59 dB
Weighted sound reduction index depending on additional measures	ISO 717-1	R_w	62 - 64 dB
Weighted reduction of impact sound pressure level depending on additional measures	ISO 717-2	ΔL_w	14 - 37 dB
Weighted normalised flanking impact sound pressure level depending on additional measures	ISO 717-2	$L_{n,f,w}$	92 - 37 dB

Sustainability

Declarations

Product Self-Declaration	A self-declaration in accordance with ISO 14021 is available. This contains extensive environmental information for planning, tenders and building certifications (LEED, DGNB, EU taxonomy).
EPD (Environmental Product Declaration)	The product has a verified EPD in compliance with the applicable standards. (ISO 14025/EN 15804)
Circular Economy	Cradle to Cradle Certified [®] Silver
Sustainable forestry	Our products can be supplied FSC [™] -certified (chain of custody certification) and fulfil all the necessary requirements. Certificate number: TUEV-COC-000515 Licence number: FSC-C119815
French VOC Regulation	Emission class A+

Evidence



Superior 

Green Level Certificate

Circularity: Majority of components can be reused/ refurbished

Life Cycle Assessment: EPD according to ISO 14025 and EN 15804

Cradle to Cradle Certified®: C2C Certified® Silver

Coverings

Coverings

Suitability of covering	elastic coverings, ceramics, natural stone, parquet, textile coverings
Suitability of covering	STONEline - Covering stone/nature stone/ceramic